

When it comes to reusable channeled medical devices, visual inspection of external and internal surfaces is a patient safety must.

VII.a: "Failure to correctly clean, inspect, or process an item may lead to transmission of pathogenic microorganisms from a contaminated device and create a risk for patient injury or infection."

2017 AORN Guidelines – Flexible Endoscopes

VII.c: "... An endoscope that appears clean may harbor debris that cannot be seen without magnification. Lighted magnification may increase the ability to identify residual soil or damage."

2017 AORN Guidelines – Flexible Endoscopes

PureClear™ Inspection Scopes help you meet relevant compliance standards such as:

- + FDA recommendations
- + ANSI/AAMI ST91:2015
- + 2017 AORN Guidelines – Flexible Endoscopes
- + 2017 AORN Guidelines – Instrument Cleaning
- + 2016 SGNA Standards of Infection Prevention in Reprocessing of Gastrointestinal Flexible Endoscopes
- + Joint Commission Standards
- + Device manufacturer IFUs
- + CDC/HICPAC Guidelines
- + APIC Standards

pure
PROCESSING

470 Mission Street, Unit 2
Carol Stream, IL 60188

For more information, please call or visit:

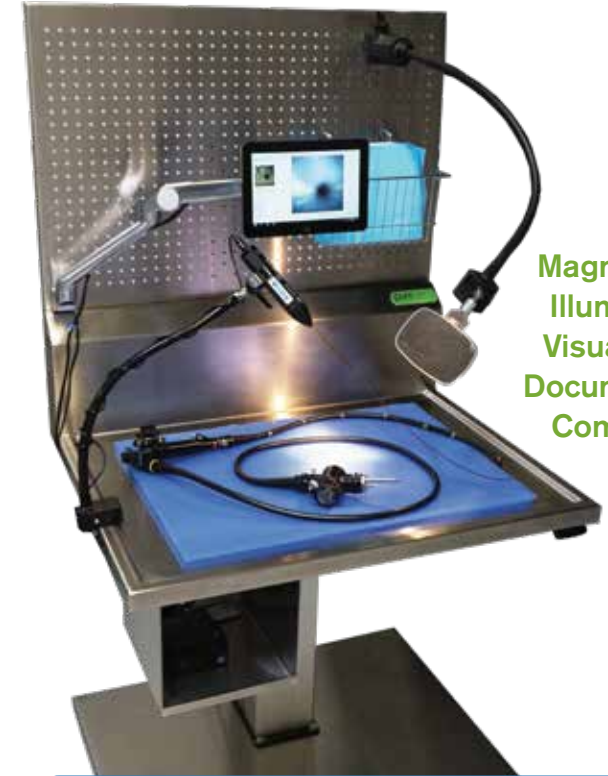
877.718.6868

www.pure-processing.com

Visit us on our social media sites!



PureClear™ Inspection Scopes



**Magnification,
Illumination,
Visualization,
Documentation,
Compliance**

"After manual cleaning, visually inspect the endoscope and its accessories. Visual inspection provides additional assurance that the endoscope and its accessories are clean and free of defects. Complex devices such as flexible endoscopes may require the use of lighted magnification or additional methods to assist with the inspection process."

www.cdc.gov/hicpac/pdf/flexible-endoscope-reprocessing.pdf

12.4.2: "Tools such as video borescopes of an appropriate dimension (length and diameter) may be used to visually inspect the internal channels of some medical devices."

ANSI/AAMI ST91:2017

pure
PROCESSING

Regular internal visual inspection of lumens and channels helps assure early detection of damage and residual debris.

"Careful visual inspection should be conducted to detect the presence of any residual soil. Inspection using magnification and additional illumination might identify residues more readily than the unaided eye..."

ANSI/AAMI ST91: 2017

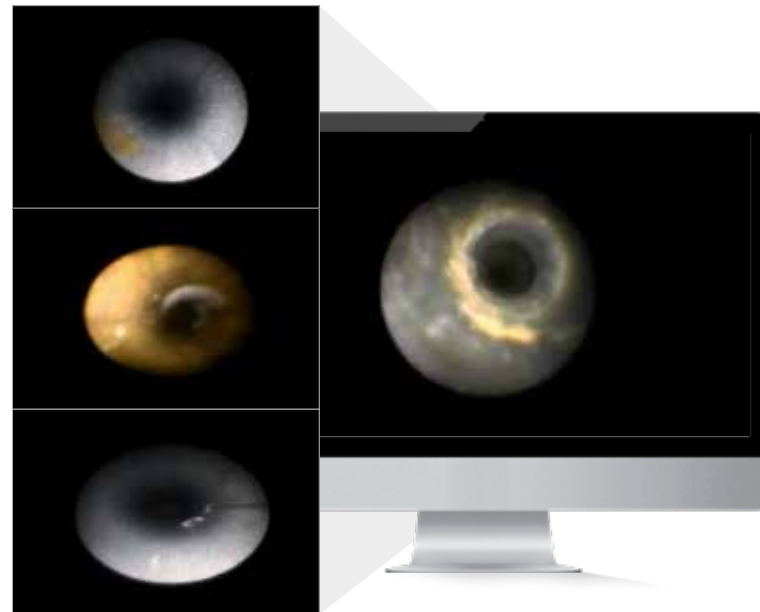


- + PureClear Inspection Scopes reach the tight spaces within channels and lumens, for optimal inspection.
- + These scopes magnify these internal surfaces to sharpen the focus on even very small irregularities and help identify residual soils.
- + Mini, short, and long PureClear scopes accommodate virtually all device channel lengths and lumen diameters.

Documentation provides patient safety, device condition, and quality management data.

"Maintain documentation of adherence to these essential steps each time an endoscope is reprocessed. Documentation is essential for quality assurance purposes and for patient tracing in the event a look back is necessary."

www.cdc.gov/hicpac/pdf/flexible-endoscope-reprocessing.pdf



- + The PureClear scope and LED Light Source with cable allow users to clearly observe internal channel surfaces and hard-to-reach areas.
- + The Firefly™ Digital Camera captures still photos and video of internal observations.
- + Firefly™ software works with any monitor to document and save visual inspection data.

Accessories add functionality and ergonomics to the inspection workspace.

- + Optional flexible arm and clamps hold scope at an adjustable ergonomic position for each user, and free hands to manipulate the device being inspected.
- + Firefly camera and viewing software enable visualization, photography and video, and documentation of internal lumen conditions.



WEB pure-processing.com

PHONE 877.718.6868