

PureStation™ Sink Insert – Sticker Installation Instructions

Before installing any stickers or labels into your PureStation Sink Insert, clean the inside basin of the sink insert with rubbing alcohol to remove any oily residues. Wipe the surface dry. This will ensure the adhesive has a strong bond to the surface of the insert.

Thermometer Strips

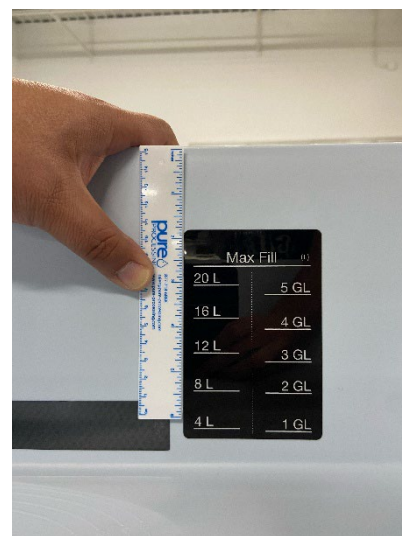
For best results, place the thermometer strip near the black, max fill sticker. Follow instructions above to ensure the strongest bond on the insert. Peel the adhesive backing. The adhesive is very sticky; it will not be easily removed once placed. Place your thermometer strip as shown in the photo, *right*. Carefully peel off the clear protective coating from the front of the thermometer strip.



Proper placement of thermometer strip in Sink Insert, any size

Volume Fill Labels – 16"x16" Sizes

Peel the backing off the volume fill sticker. Wipe down the surface as indicated above. The label will include a (S) in the top right. Measure down from the top of the Sink Insert 1 7/8". Place a mark in the basin. Slide the ruler over 4", and place another mark 1 7/8" from the top of the insert basin. Use a straight edge to draw a line connecting the two marks. Apply label across this line. Use a ruler or flat surface to wipe out all the air bubbles in the label.

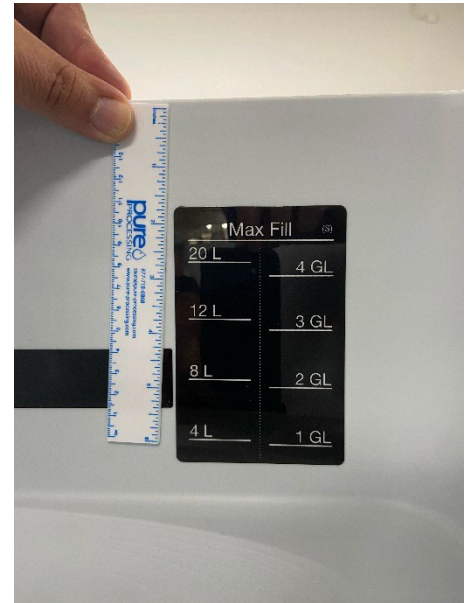


16"x16" Insert Alignment



Volume Fill Labels – 16"x26" Sizes

Peel the backing off the volume fill sticker. Wipe down the surface as indicated above. The label will include a (L) in the top right. Measure down from the top of the Sink Insert 2 1/8". Place a mark in the basin. Slide the ruler over 4", and place another mark 2 1/8" from the top of the insert basin. Use a straight edge to draw a line connecting the two marks. Apply label across this line. Use a ruler or flat surface to wipe out all the air bubbles in the label.



16"x26" Insert Alignment