



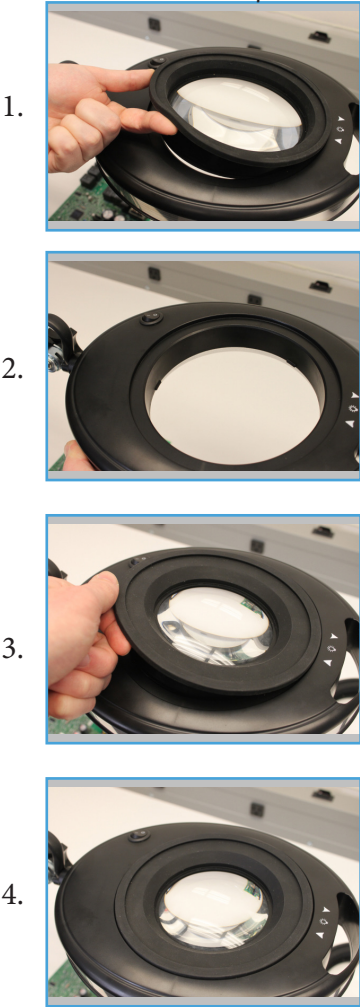
Setup and Use

- Attach the table clamp to the side of your work bench and tighten securely
- Insert the task light into the table clamp
- Connect the power adapter to the power port
- Plug the power adapter into an appropriate power outlet
- Activate the On/Off switch to the On position
- Use the brightness controls to select the level of LED brightness
- To remove a lens, simply grab by the rubber ring and carefully lift out of the lamp.
- To insert a lens, simply push the lens into the lamp opening by the rubber ring until it is secured.

Features

- Designed to be used with multiple lenses for a superior magnification range
- Fully covered spring arm - no pinching hazards
- 360 rotatable lamp head
- 64 ultra-bright LEDs with brightness adjustable controls
- Attractive modern design
- Includes a heavy-duty table clamp and power adapter

Easy Lens Replacement No Tools Required



IN-X Magnifying Lamp	
Item #	26501-LED-INX
LEDs	64 SMD LEDs
Length	Max 36"
Lumen	Max 950
Color Temperature	6500K
Power Consumption	1-10W
Included Lens	26501-INX-RLSD 5 Diopter Lens (2.25X Magnification)
Package Contents	<ul style="list-style-type: none">• In-X Magnifying Lamp• Heavy-Duty Table Clamp w/2-Inch Opening• Power Supply (Input: 100-240V ~ 50/60Hz 0.45A) (Output: 26.0V / 500mA)• 5 Diopter Lens (2.25X Magnification) included Additional Lenses Sold Separately

In-X

Interchangeable Magnification

User Guide



26501-INX-RL5D

In-X 5 Diopter Lens (2.25x Magnification)



26501-INX-RL15D

In-X 15 Diopter Lens (4.75x Magnification)