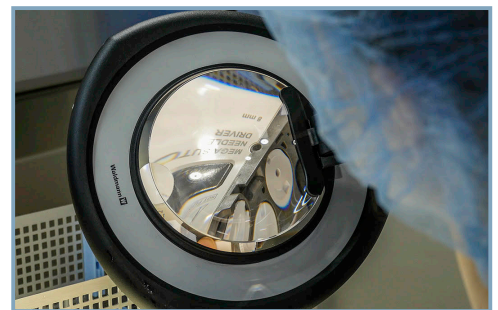


PureSteel™ Magnifying LED Task Light

Inspect instruments with ease

The PureSteel Magnifying LED Task Light makes inspection of instruments and devices easier with 4x to 5.5x magnifying power and selective LED lighting. PureSteel Magnifying LED Task Lights can be installed on tabletops and back wall panels. PureSteel LED Task Lights lights are also ideal for meeting packaging and assembly guidelines and standards.



- Outfitted with 48 LED lights
- Up to 5.5x magnifying power
- Multiple LED sections can be switched on or off and are dimmable
- Exchangeable magnification lenses easily remove for cleaning
- Features 39" stable arm, sealed joints, robust aluminum and high-performance plastic
- Voltage 100-240V, 50/60Hz
- Operation touch-panel on head
- Magnification 3.5 diopters or 3.5d + 8d
- Color Temperature 4000K
- Color Rendering Index (CRI) 90
- Luminaire Material anodized aluminum
- Lens Material acrylic
- Power Consumption 14W
- Protection Rating IP20
- Certification CE, ETL/cETL
- Cord/Plug 12' cord w/ US plug

pure
PROCESSING

For more information:

VISIT www.pure-processing.com OR CALL 877.718.6868