

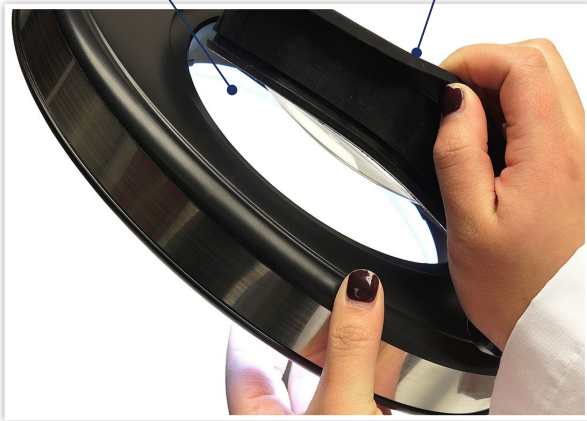
# PureSteel™ 4.75x Magnification Task Light

## Enhanced magnification for instrument reprocessing

The PureSteel™ 4.75x Magnification Task Light provides sterile processing and gastroenterology professionals with enhanced magnification for external visual inspection capabilities. The task light features 2 different glass lenses that are easily swapped to match the magnification to the task or IFU (a 4.75x and 2.25x magnification lens). The task light features touch-sensitive brightness controls and a spring-balanced arm for easy adjustment & control.

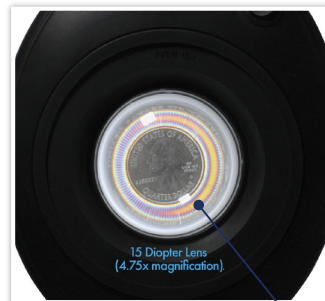
Removable lens  
(no tools required)

Silicone grip keeps  
lens secure



### FEATURES

- Meets 4x magnification as required by Intuitive Surgical & VHA standards
- 2 removable, swappable lenses (no tools required)
- Swivel-motion, covered spring-balanced arm (no exposed springs)
- Touch-sensitive brightness controls
- Capable of up to 4.75x magnification
- LED bulb; estimated 20,000 hour lifespan
- 360 degree rotatable head



### TECHNICAL SPECIFICATIONS

<b>Illumination</b>	64 adjustable SMD LED's
<b>Arm reach</b>	36 inches
<b>Lumens</b>	Max 950lm
<b>Power consumption</b>	1-10W
<b>LED color temperature</b>	6500K
<b>Power supply</b>	Input: 100-240v Output: 26.0V



5 Diopter (2.25x) Lens  
Also Included

**pure**  
PROCESSING

VISIT [www.pure-processing.com](http://www.pure-processing.com) OR CALL 877.718.6868